A blue-tinted world map showing the continents of Africa, Europe, and Asia, set against a dark blue background.

Imperial Queen's Park Hotel
on 23 August 2013

A grayscale image of hands typing on a laptop keyboard, overlaid with a network diagram of nodes and connecting lines.

6th ATRANS Symposium

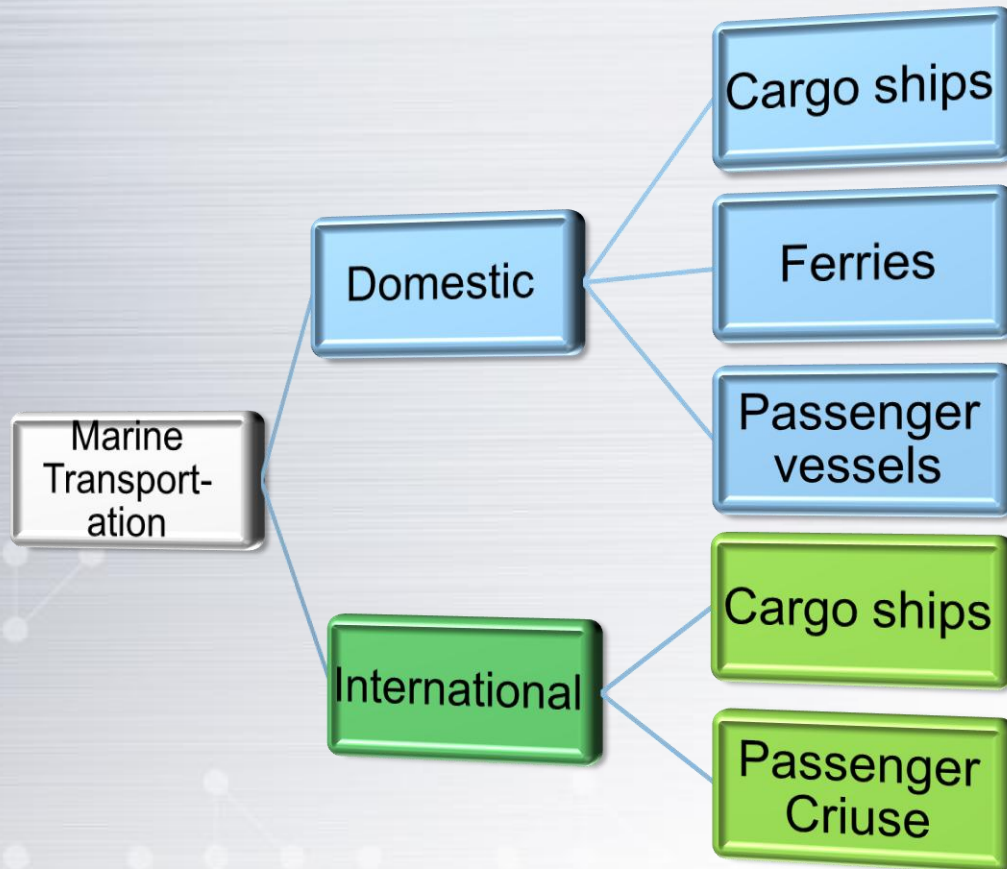


Marine Department

Marine Traffic Safety



Marine Transportation





Marine Accidents



Fire on board



Speed Crafts
Crashed



Collision



Run aground



Fire in E/R



Sunk



Elements of Safety of Navigation





Element of Safety of Navigation

❖ Safety of Navigation

- Ships' Hull and Machinery/Electrical System
- Traffic condition, Collision Avoidance Regulations
- Berths and Channels, Dangers to navigation
- Charts and Navigation Aids,
- Communications and Maritime Safety Information
- Weather condition





Establishment of Vessel Traffic Services(VTS)

- ❖ VTS is a valuable tool to ensure safety of navigation and efficient movement of vessels in ports and can also assist coastal vessels transit.
- ❖ The VTS Manual states ‘ The realities of modern shipping, with larger and less manoeuvrable ships, traffic congestion in ports, hazardous cargoes and the potential for environmental damage demand that sophisticated measures be taken to reduce risks. Establishing a VTS is a significant response to that demand.



Effective implementation of VTS

VTS cannot be effective without the appropriate level of legislation to empower the operation which could include:

- ❖ Scheduling of vessel movements and the times between which a vessel may transit
- ❖ Implementation and monitoring of speed limits
- ❖ Movement restricted areas
- ❖ One-way routes and the assigning of anchorages
- ❖ Incident response
- ❖ Interaction with other services within the port



Types and Functions of VTS

- ❖ Two categories of VTS are recognized: Port/harbour and coastal. A port/harbour VTS is mainly concerned with vessel traffic to and from or within a port/harbour while a coastal VTS is mainly concerned with traffic passing through a VTS area and where usually only an information service is provided
- ❖ VTS functions are
 - Interacts with traffic;
 - Responds to traffic situations;
 - Authorized by the Competent Authority;
 - Staffed by V-103/1 Certified personnel;
 - Equipped as appropriate to provide services.



VTS functions

- ❖ VTS functions are categorized into 3 types of services : Information Service(INS), Traffic Organization Service(TOS) and Navigational Assistance Service(NAS)
- ❖ The INS is a service to ensure that essential information becomes available in time for onboard decision-making.
- ❖ The INS involves maintaining traffic image and allows interaction with traffic and response to developing traffic situations(eg. Identity, position, intention and destination, reporting of movement, Promulgated navigational information).



VTTS functions

- ❖ The TOS is a service to prevent the development of dangerous maritime traffic situations and to provide for the safe and efficient movement of vessel traffic within the VTS area
- ❖ The TOS may involve the allocation of water space, traffic clearance, sailing/route plan, specific information such as traffic congestion and special vessels with limitation.



VTs functions

- ❖ The NAS is a service to assist onboard navigational decision-making and to monitor its effects, especially in difficult navigational or meteorological circumstances or in case of defect or deficiencies
- ❖ The NAS may be provided in addition to the INS or TOS, essential and timely navigational information to assist the onboard navigational decision-making process eg.; navigational advice and /or instruction



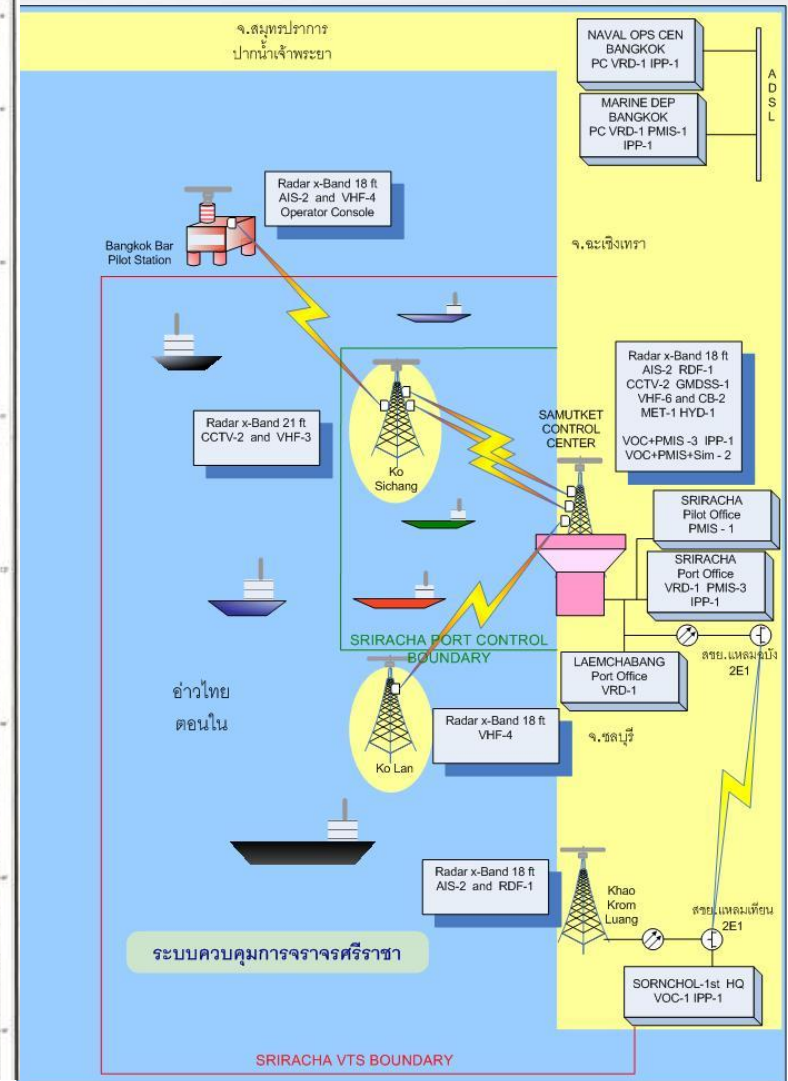
VTS Equipment

- ❖ The characteristic of VTS area sets the requirements of the VTS equipment, this may include:
 - Vessel traffic sensors: Radar, AIS, CCTV
 - Communications
 - Vessel traffic management system
 - Port management information system
 - Hydrological and meteorological sensors
- ❖ Standard of VTS equipment: IALA Recommendation V-128: Operational and Technical Performance Requirements for VTS Equipment



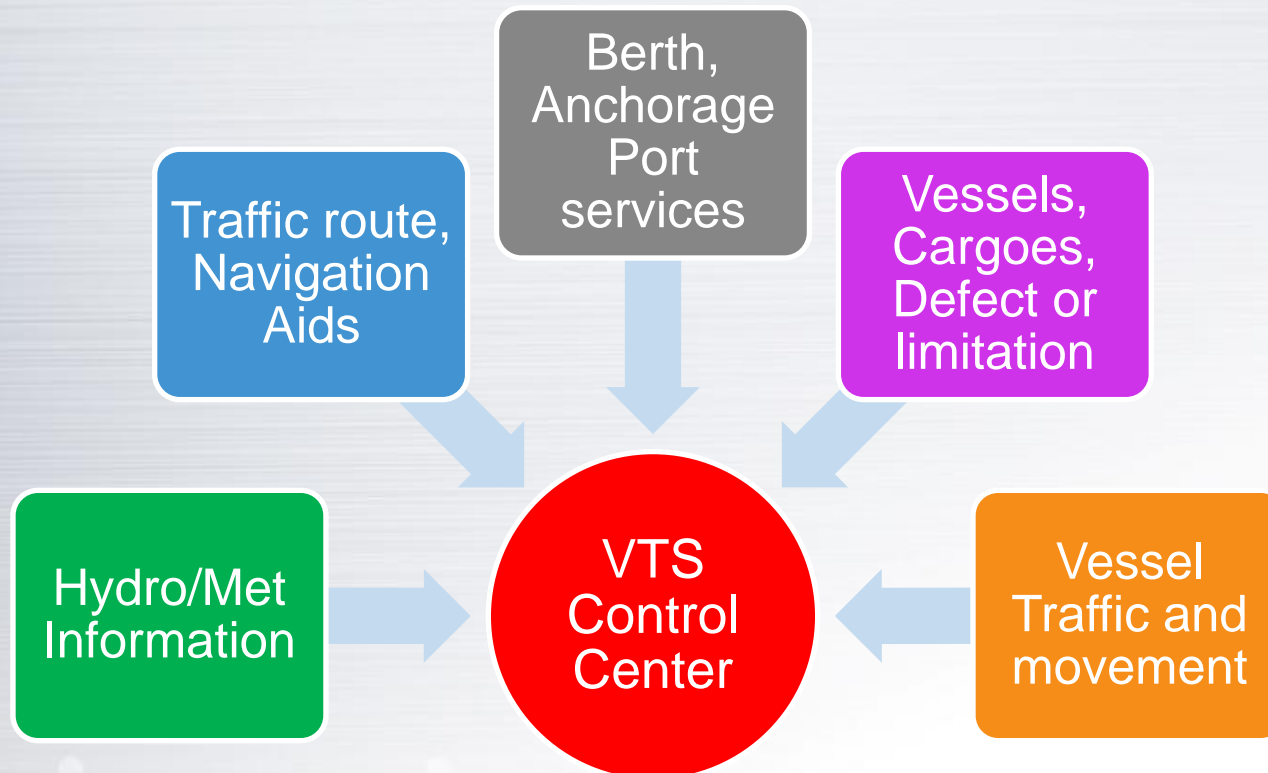
Traffic in Sriracha Port

Year	Coastal Vessel (Nos.)	Foreign- going Vessel (Nos.)	Import Cargoes (MT)	Export Cargoes (MT)
2555	4,410	8,073	25,221,563	25,550,675
2554	3,832	6,494	21,505,647	18,706,276





Marine Traffic Information



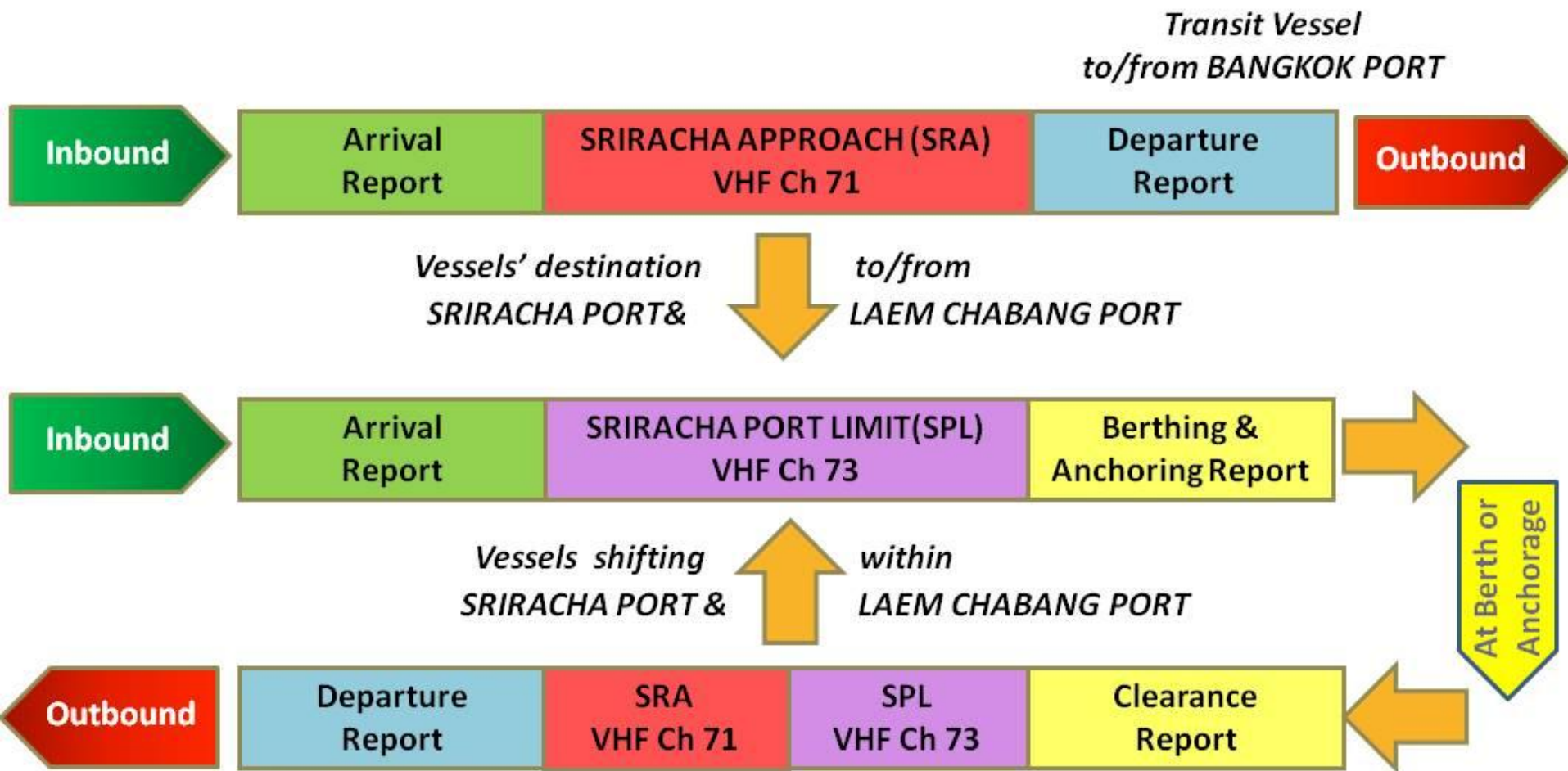




Sriracha VTS requirements and Services

- ❖ Vessels of 60 grt or above both Coastal and Foreign-going are required to notify ETA to Marine Department 24 hours in advance and report to Sriracha VTS when arrives the VTS area. As well as, the vessels before departure Sriracha Port have to notify ETD to Marine Department 6 hours in advance.
- ❖ Sriracha VTS is now in operation since 1 April 2012 provides INS and TOS services with qualified VTS personnel according to IALA VTS Manual and IALA Recommendation V-103 Standard of Training and Certification of VTS Personnel.

SRIRACHA VTS SHIP REPORTING SYSTEM





END OF PRESENTATION

